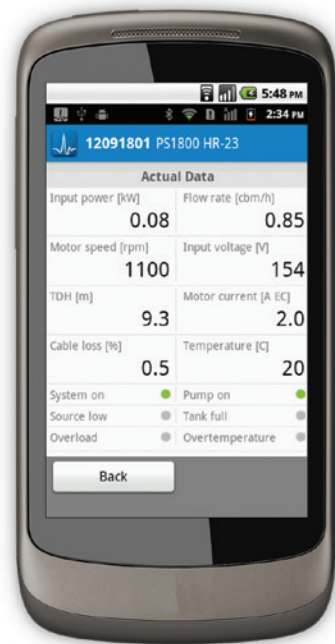




PS DataModule and PumpScanner

INTEGRATED DATA LOGGER AND ANDROID™ APP



BENEFITS

- Provides clear pump and water source performance information for monitoring and future planning
- Very professional diagnostic and information tools available on low cost Android™ smart phones
- Reduces fault finding time and cost
- Identifies any pro-active service work that needs to be carried out

FEATURES

- Provides real-time and stored data for
 - voltages
 - currents
 - input and output power
 - flow rates
 - operating time
 - head
 - pump speed
 - cable losses
 - temperature, and more
- Bluetooth™ connectivity for secure contactless data transfer
- Stores up to 10 years of data (at 10 minute frequency)
- Two-way communication to control and program pump speeds and operating times
- Connections for additional external sensors (flow and pressure)
- LORENTZ PumpScanner for Android™ App for viewing performance data
- PumpScanner is available in Customer and Service Engineer versions

STICK IT WHERE THE SUN SHINES

Australian's have a habit of being told to stick things in dark places, but the LORENTZ range of solar pumps and controllers work better where the sun shines.

From swimming pools to stock water to irrigation – no fuel & no electricity.

Just sunshine and you're pumping.



PS Communicator

REMOTE COMMUNICATION DEVICE

BENEFITS

- Actively monitor your water critical processes and applications, perfect for drinking water, livestock or irrigation
- Monitor exactly what is happening on remote sites from one simple to use management screen
- Have control of the time and quantity of water that is moved by your pumps from any web connected device
- Have access to ready integrated, information rich services without the need to invest in expensive equipment or infrastructure
- Allow your nominated service partner to gain access remotely to diagnose any performance issues
- Pro-actively know when there is a problem and achieve the fastest resolution with minimal impact on your water supply
- Auto configuring, low cost simple to buy and use service

FEATURES

- Self-contained controller and GPRS/cellular modem
- Solar powered with backup battery
- Automatically pairs with up to eight pumps that are in Bluetooth range – pumps must have PS DataModule installed
- Connects to each pump in turn and sends current running data and status via the Internet to a central server
- All data is encrypted and secure
- Local irradiation measurement
- Future proof design with over the air upgrades and hardware for additional inputs and outputs



PS pumpMANAGER

CLOUD MANAGEMENT SERVICE

FEATURES

- Remote monitoring configuration and management of LORENTZ pumps
- Cloud based service for access from any internet enabled device (PC, tablet or cellphone)
- Active reporting of any alerts or problems
- Ability to switch on, switch off, monitor external sensors and control pump speed remotely
- Inclusive monthly fee for cellular data access, application updates and web service
- Customer, manager and technician views

