

A background image of water splashing, with a vertical stream of water falling from the top and a large splash of water at the bottom, creating a dynamic and fluid visual effect.

Liquid Level Alarms

Section 6

Liquid Level Alarms Standard & Deluxe



FPC-12650 & FPC-12651

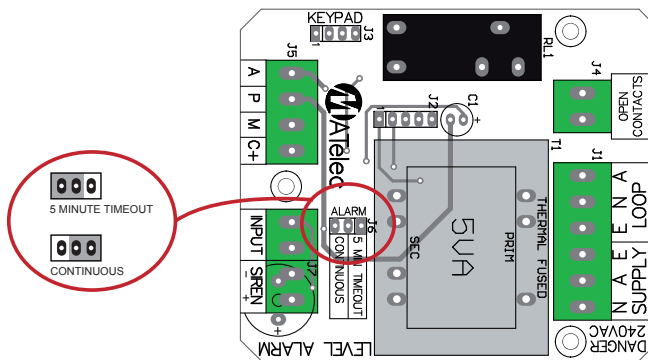
The MATElec Liquid Level Alarms are designed to provide warning indication when storage (Effluent, Grey Water or Rain Water etc) tank is either empty or full.

Warning indication is determined by a float switch. Warnings are; Audio (buzzer), Visual (LED Pilot Light and/or Strobe). The Buzzer can be muted via a mute button. If not muted the Audible buzzer will automatically silence after 5 minutes. If a continuously sounding audible alarm is required, this can be done by changing the Jumper position on the circuit board (See FIGURE 1).

The visual alarms will continue to remain on, until the alarm condition is eradicated.

A standard feature of the Level Alarm is a 'Voltage Free' (5Amp rated) output for connection to auxiliary devices.

Controller can be installed up to 50m from the tank being monitored. Float Switch cabling is 'safe', low voltage circuitry.



Liquid Level Alarms

Flush Mount & Battery Backup



FPC-12656 - Flush Mounting

Housed behind an attractive standard switch plate, is the unique flush mounting Liquid Level Alarm. Purpose built for the modern home environment, where rain water tanks, both above ground and below ground, have become a common feature. This discreet device, complements the decor of any home.

The level alarm can be used for either low or high level alerts and provides for a safe, low voltage cabling installation between tank float switch and display unit.

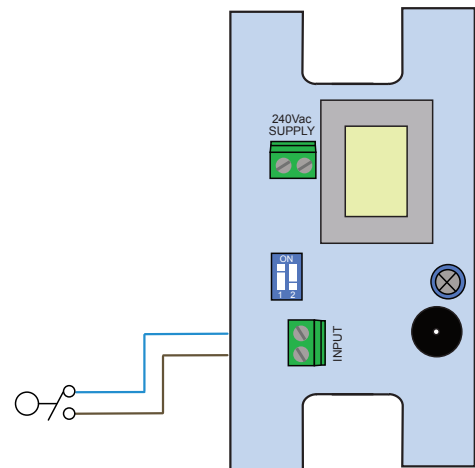
Features of this product include:

'Normally Open' or 'Normally Closed' input options.

The unit is designed to initiate both visual and audible alarms as soon as an alarm condition occurs. The audible alarm can be silenced by way of the mute button or, it will automatically silence after 5 minutes of sounding.



FPC-12656
Standard Switch Plate size

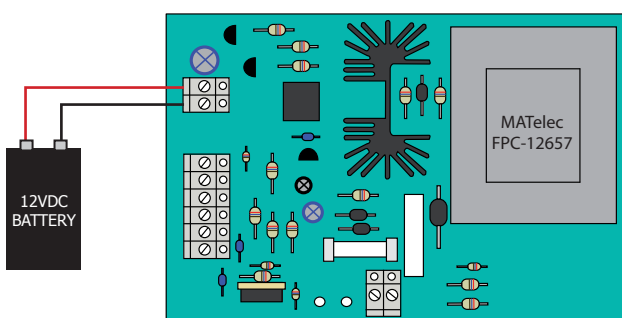


Wiring Diagram

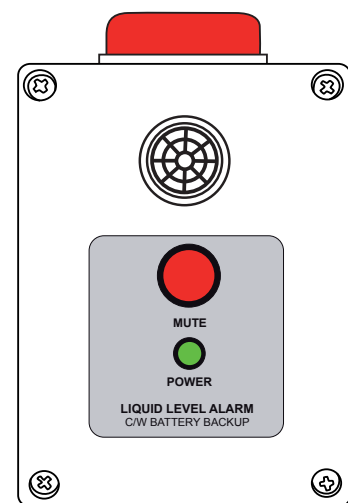
FPC-12657 - Battery Backup

Since power failure at a pump station generally means a loss of the alarm features, there is a requirement for a 'Battery Backed Up' Level Alarm.

All features of the models 12650 & 12651 are common to this device however the unique feature of this product, is the provision of battery backup. Continuously charged by mains 240Vac power supply, the unit's battery has sufficient capacity to drive the audible alarm for a period of 5 minutes and the visual alarm for a period of 12 hours after power failure has occurred. The battery is rated for continuous charging.



Wiring Diagram



FPC-12657
Dimensions - 119mm (h) x 73mm (d)
x 160mm (w)

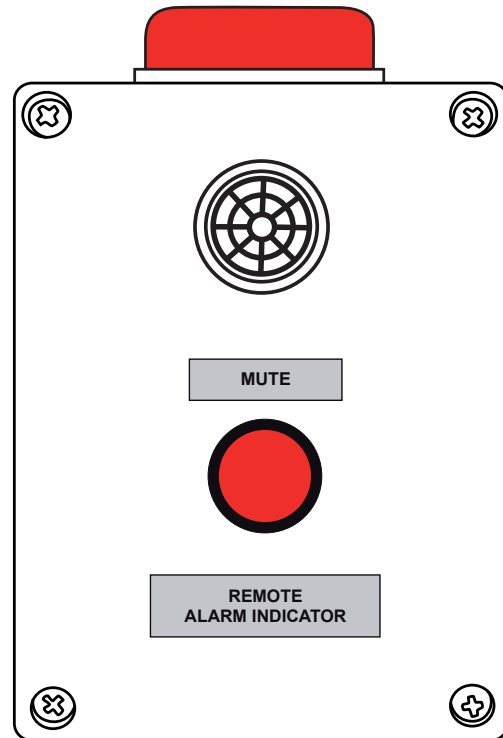
Alarm Indicators - Remotely Powered

The MATElec Alarm Indicators are a low voltage (24Vac) alarm indicator that are generally used in conjunction with the Dual or Single Pump Controllers. The main function of the indicator is to provide remote indication of an alarm condition that exists in a pump station which is located in a inconspicuous location. The indicators would generally receive their input from an alarm interface module (see section 2 'Dual Pump Control Auxiliary Equipment').

The enclosure, utilized for both models, is constructed from UV resistant polycarbonate and has an IP55 weatherproof rating.

Alarm indication will continue until alarm condition is remedied at pump station.

Typical applications include Stormwater Pump Stations located in carpark basements and Industrial/Commercial Properties where pump station is located at rear of building.

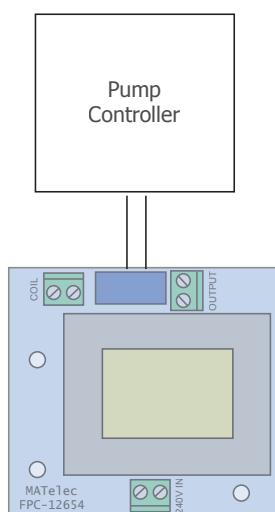


FPC-12652

Dimensions - 85mm (h) x 55mm (d) x 125mm (w)

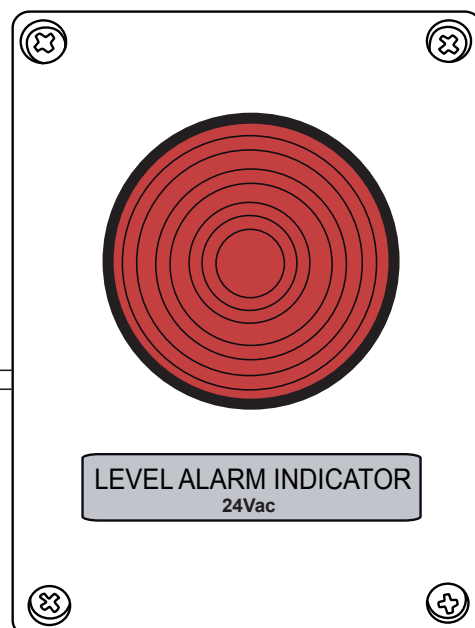
Wiring Instructions

2 Core 1.0mm² Cabling is recommended for interface connection



FPC-12654

24Vac



FPC-12655

Dimensions - 119mm (h) x 73mm (d) x 160mm (w)